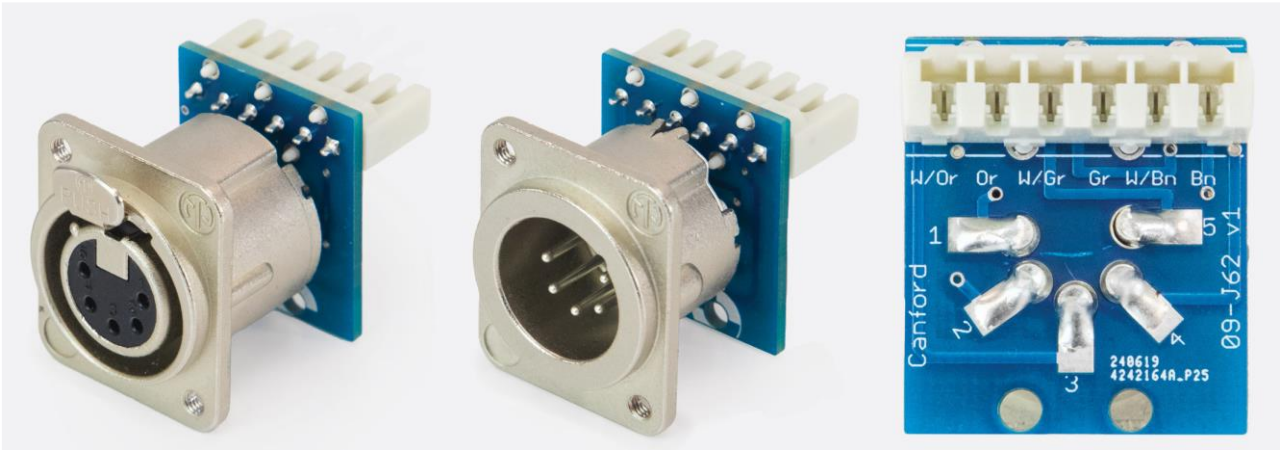


CANFORD DMX ADAPTER Panel mount, XLR 5-pin to IDC



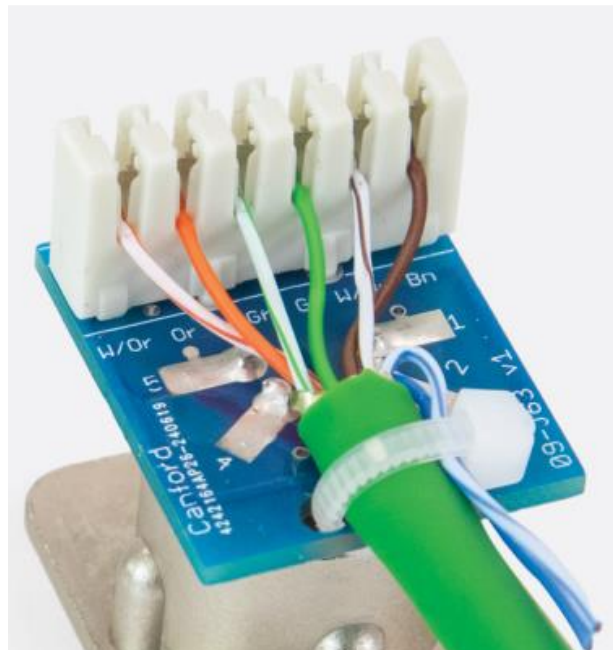
46-1279 CANFORD DMX ADAPTER Panel mount, XLR 5-pin female to IDC

46-1280 CANFORD DMX ADAPTER Panel mount, XLR 5-pin male to IDC

Five pin male or female XLR to IDC for DMX applications. Can be panel mounted by offering the connector to the rear of the panel, then securing using M3 screws.

For use where cables have been installed & wall plates or patch bays need fixing at high speed & in a cold, (no soldering), environment.

The depth behind the panel is approx. 36mm, see NC5FD-LX-M3, NC5MD-LX-M3 for connector dimensions.



Wire	Wire Colour (T568B)	DMX512 Function	XLR Pin
1	white/orange	data 1+	3
2	orange	data 1-	2
3	white/green	data 2+	5
6	green	data 2-	4
4	blue	Not Assigned	
5	white/blue	Not Assigned	
7	white/brown	Common for data 1	1
8	brown	Common for data 2	1

**Note:** Any screen present on RJ45 connector is not passed through to XLR