



## Sennheiser Documentation App



or online at  
[www.sennheiser.com/download](http://www.sennheiser.com/download)  
 evolution wired\_



# e 965

Quick Guide  
 Kurzanleitung  
 Guide rapide  
 Guida rapida  
 Guía de inicio rápido  
 Guia rápido  
 Beknopte handleiding  
 Krótka instrukcja obsługi  
 Snabbguide

Kvikstartguide  
 Pikaohje  
 Γρήγορος οδηγός  
 Kısa Kılavuz  
 Краткая инструкция  
 快速指南  
 快速使用指南  
 クイックガイド  
 퀵 가이드

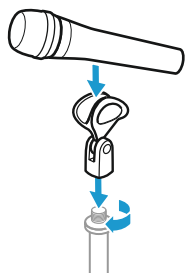
Sennheiser electronic GmbH & Co. KG

Am Labor 1, 30900 Wedemark, Germany  
[www.sennheiser.com](http://www.sennheiser.com)

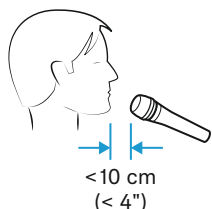
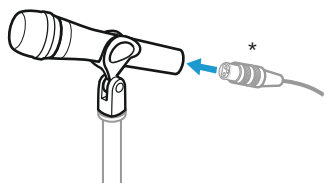
Printed in Germany  
 Publ. 08/21, 581340/A03

## SENNHEISER

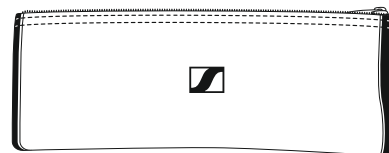
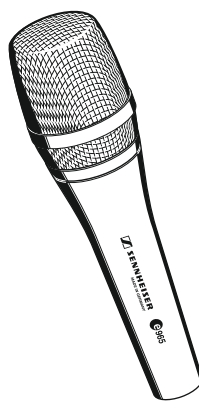
### Setup



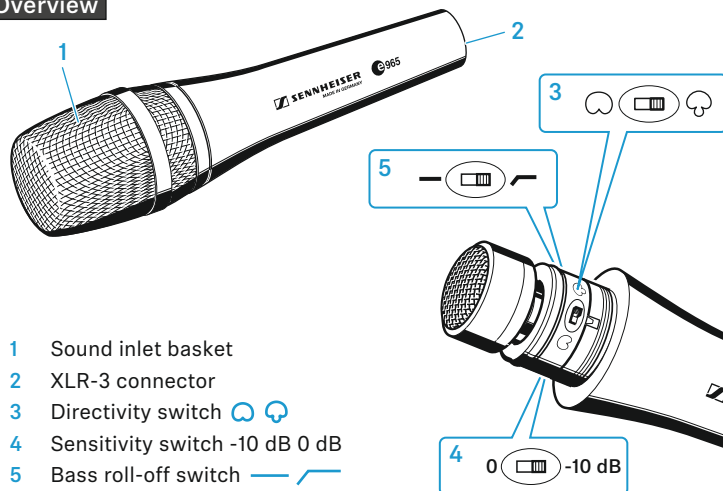
\*XLR-3 cable not included



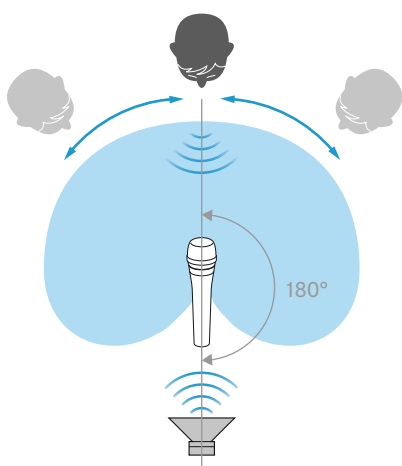
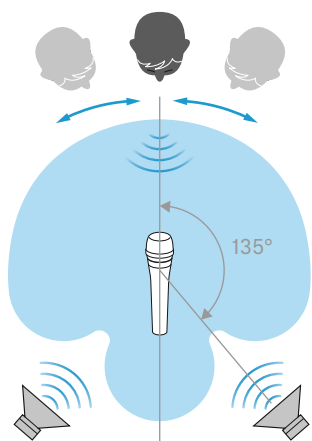
### In the box



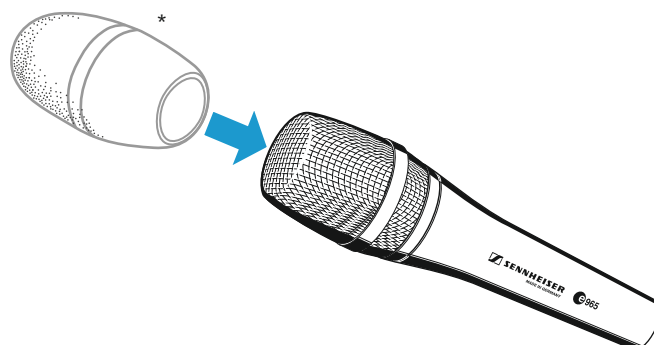
### Overview



- 1 Sound inlet basket
- 2 XLR-3 connector
- 3 Directivity switch
- 4 Sensitivity switch -10 dB 0 dB
- 5 Bass roll-off switch

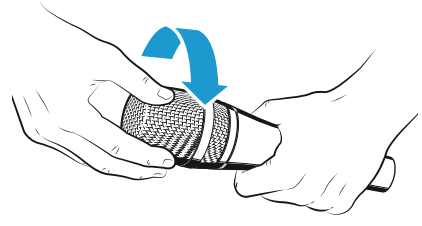
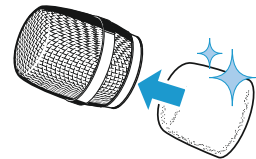
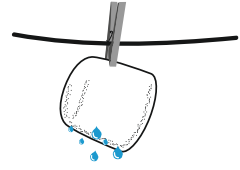
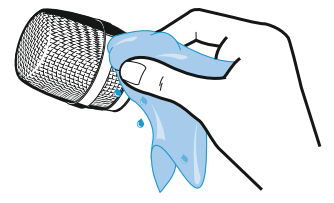
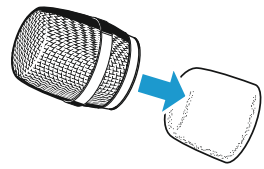
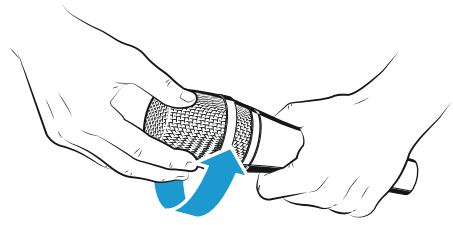


### Accessory

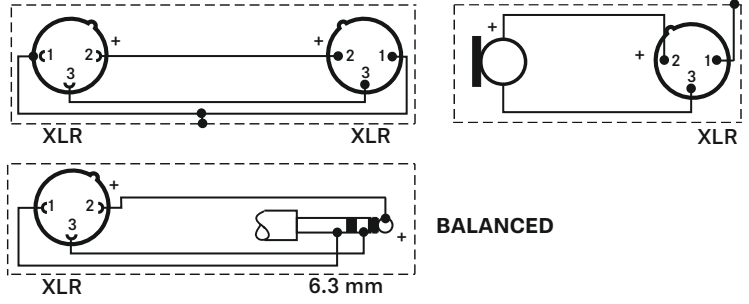


\*MZW 4032 not included

## Cleaning



## Connector assignment



## Specifications

Transducer principle	externally polarized dual diaphragm AF condenser microphone
Membran diameter	25.4 mm/1"
Frequency response	40 - 20,000 Hz
Pick-up pattern	cardioid/super-cardioid, switchable
Sensitivity (free field, at 1 kHz)	7 mV/Pa
with pre-attenuation	2.3 mV/Pa
Nominal impedance (at 1 kHz)	50 Ω
Min. terminating impedance	1 kΩ
Maximum sound pressure level (passiv)	142 dB
with pre-attenuation	152 dB
Equivalent noise level	21 dB (A)
Phantom powering	48 V / 3.5 mA
Connector	XLR-3
Temperature range	0 °C to +40 °C
Dimensions	∅ 48 x 199 mm
Weight	396 g

## Polar pattern and frequency response

